

2750 RXJ



www.ommelift.dk

**CRAWLER MOUNTED BOOM PLATFORM
WITH UNIQUE UP AND OVER OUTREACH**

OMMELIFT

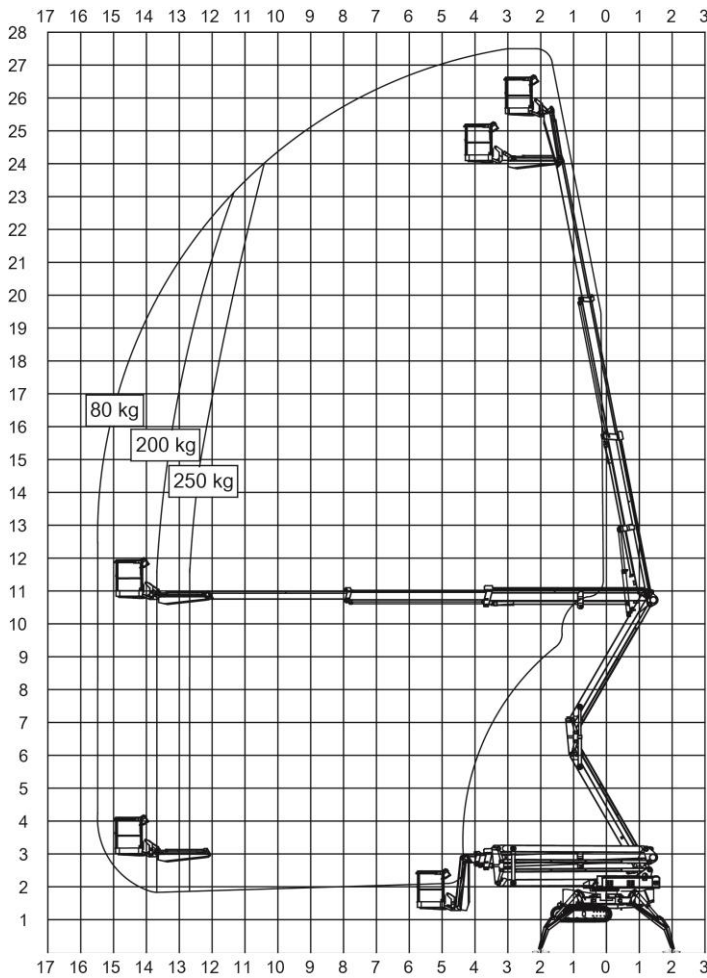


OMME LIFT A/S – Lægårdsvej 4 – DK 7260 Sdr. Omme
Phone: + 45 753 413 00 – Fax: + 45 753 415 92
E-mail: omme@ommelift.dk – Web: www.ommelift.dk

Quality since 1906

2750 RXJ

Crawler Mounted



Technical data:	2750 RXBJ	2750 RXBDJ
Max. working height	27.50 m	
Max. outreach	15.50 m	
Max. basket load	250 kg	
Fly jib (jib and basket)	2.70 m	
Basket size	1.25x0.8x1.1m	
Rotation	± 355°	
Power sources:		14 kW/18.8 hp
Diesel engine		24 V/22 A
Generator		24 V/22 A
Battery	24V/400Ah/5h	24V/200Ah/5h
Charger	24 V/30 A	
Travelling length	7.34 m	
Travelling height	2.19 m	
Travelling width, adjustable	1.50 / 1.10 m	
Operational width	4.60 / 3.75 m	
Total weight approx.	5050 kg	
Gradeability:	35% (19.3°)	
Across slope up to	35% (19.3°)	
Up and down slope up to	35% (19.3°)	
Stabilization up to	40% (21.8°)	
Proportional controls	+	
230 V outlet in basket	+	
Wireless remote control (drive only)	O	
White non-marking tracks	O	
Automatic set-up and take-down	O	

+ Standard O Optional

HIGH SPECIFICATION – HUGE OUTREACH



- The diesel engine power allows the lift to traverse soft muddy terrain and grassed inclines. Gradeability is 35%, equivalent to 19.3°. Combined with the strong, non-skid crawler tracks the platform truly provides cross country access. The compact dimensions allow access in to narrow and awkward areas.
- The all-terrain features are not only for park and woodland areas, but also for working internally for example in shopping centres. The average force from the tracks is only 30 N/cm². The low force and the non-marking tracks offer optimal protection when driving on vulnerable surfaces.
- An outreach of up to 15.5 m and a zero tail swing articulating riser give an exceptional 10.5 m up and over reach. The long movable jib enables fine adjustment. A maximum working height of 27.5 m together with the exceptional outreach offer huge versatility in application. High utilisation means cost efficiency.
- The manual levelling of the stabilizers ensures safe set up in the most difficult situations the first time and every time. Deployment is actually possible on uneven ground of up to 40%, allowing set up on hilly ground, steps or banks.